

NVR Standalone



The Intelligent Surveillance Solution

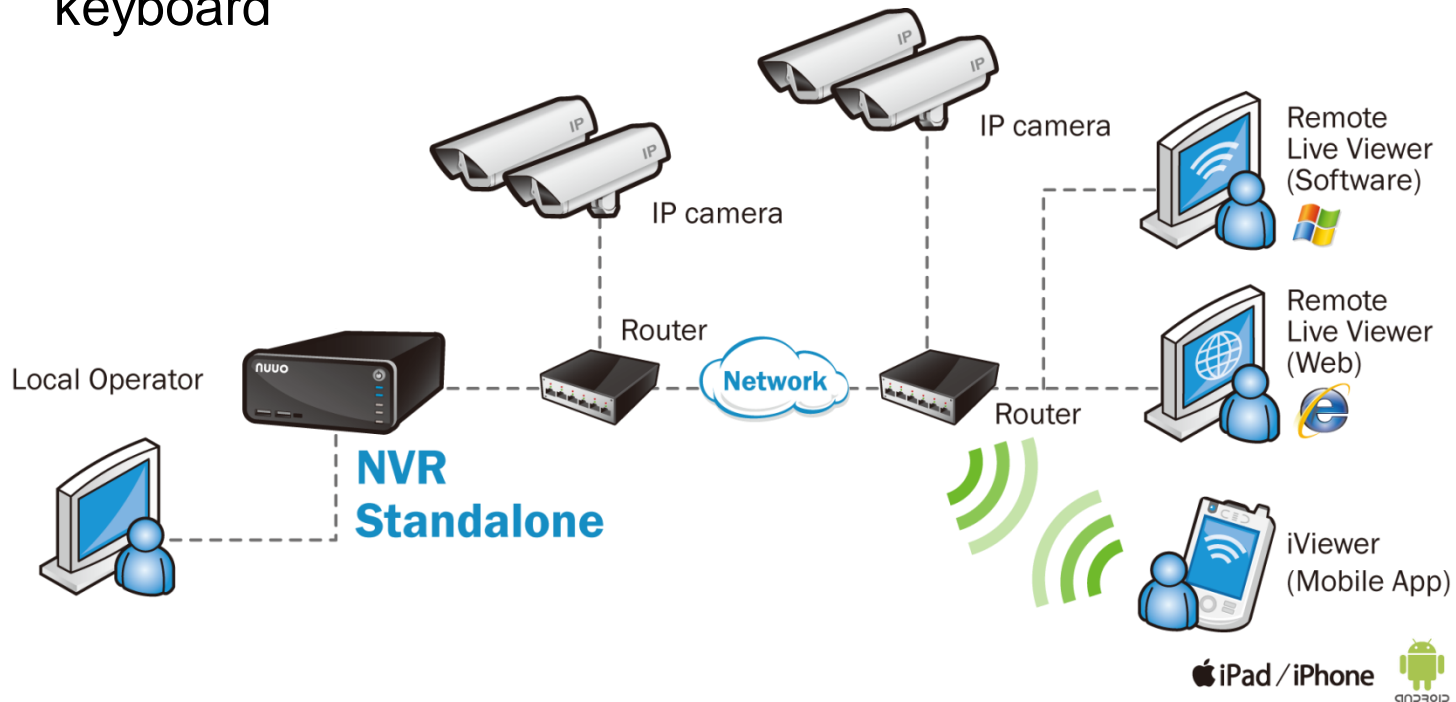
Outline

- Introduction
- Selling Points
- Specification
- Market Segment
- Competitor Comparison
- Appendix



Introduction

- **A brand new generation Linux-embedded NVR**
 - Decrease the entry barrier from DVR to NVR
 - No more IP setting nightmare
 - Full system settings on local side by mouse, remote control and keyboard



Selling Points



High Quality of Local Display

- 120fps @1080p, H.264
- 240fps @720p, H.264



One-Click Setup

- Search and add IP cameras automatically
- More than 50 brands of IP cameras are supported



ezNUUO – Free From Router Setting

- Access to the unit via Internet Explorer without router setting
- Access to the unit via Mobile Client without router setting



Point of Sale (POS)

- Through TCP/IP and NUUO POS box to transfer data
- POS text overlay on live videos



Alarm Source of NUUO Central Management System

- Map-based central management system
- Support video wall in CMS
- Compatible with NUUO Mainconsole family





High Quality of Local Display

- NS-1040 Throughput: 60Mbps
- Performance (based on H.264)

Resolution	FPS (NTSC)	Recording	Liveview (Local)	Liveview (Remote)	Playback (Local+Remote)
D1	30	8 CH	8 CH	8 CH	8 CH
1.3M (720p)	30	8 CH	8 CH	8 CH	8 CH
2M (1080p)	15	8 CH	8 CH	8 CH	8 CH

- Local Display Decoding Capacity

Format	Capacity
H.264	120fps @1080p or 240fps @720p (Up to 4M per channel)
MPEG4	120fps @1080p or 240fps @720p (Up to 2M per channel)
MJPEG	15fps @720p





One-Click Setup

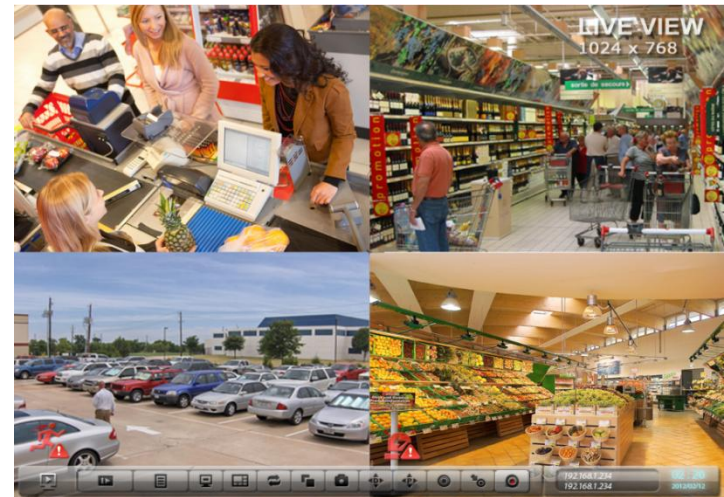
- Connect the unit, router/switch, IP cameras and run “Auto Camera Setup” on server’s interface, all cameras found within the same subnet will be added in the unit automatically.
 - WAN Scenario: save the time to key in IP address and credential
 - LAN Scenario: save the time to assign IP address to each camera

Result of Auto Camera Setup

Page 1

	IP Address	Vendor	Model	MAC
<input checked="" type="checkbox"/>	192.168.1.138	Sony	SNC-ER520	00-1A-80-53-AF-12
<input checked="" type="checkbox"/>	192.168.1.123	Sony	SNC-ER520	00-1A-80-53-AF-13
<input checked="" type="checkbox"/>	192.168.1.128	Sony	SNC-ER520	00-1A-80-53-AF-14
<input checked="" type="checkbox"/>	192.168.1.125	Sony	SNC-ER520	00-1A-80-53-AF-15

ok





ezNUUO – Free From Router Setting

- **Step 1:** Connect the NVR Standalone to a router with Internet connection, and register a server ID on local or web page
- **Step 2:** Log into www.eznuuo.com or NUUO mobile client to see live videos and trace back the history to secure your property



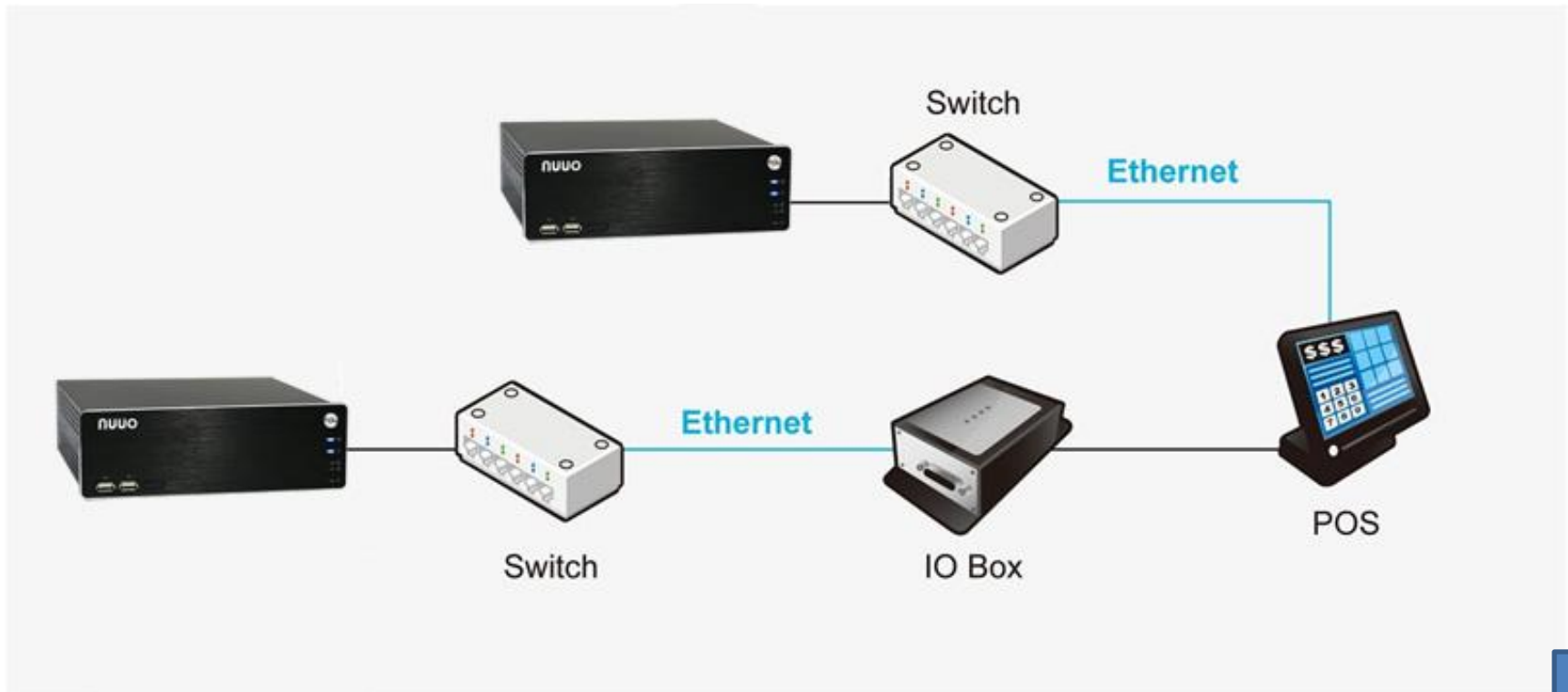
Note: 1) ezNUUO webpage is under designing...; 2) ezNUUO service will be supported in iPad/iPhone iViewer as Standalone v1.0.0 releases, while Android is in v1.1.0.





Point of Sale (POS)

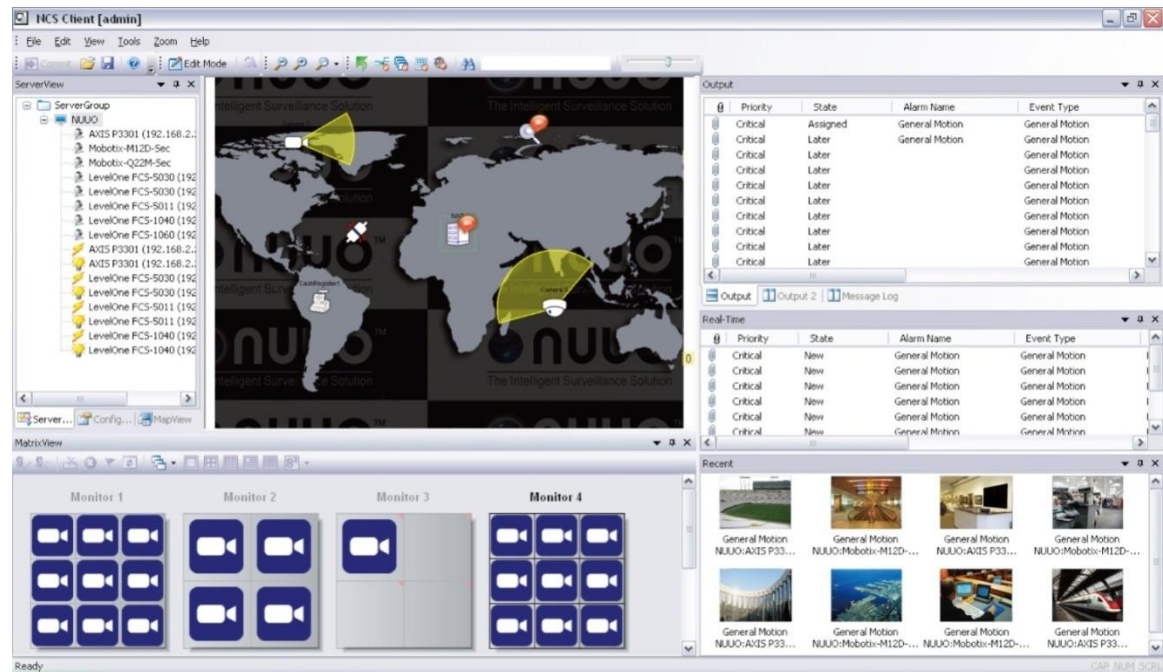
- Through TCP/IP and NUUO POS box to transfer data
- POS text overlay on live videos





Alarm Source of NUUO Central Management System

- Map-based central management system
- Support video wall in CMS
- Compatible with NUUO Mainconsole family

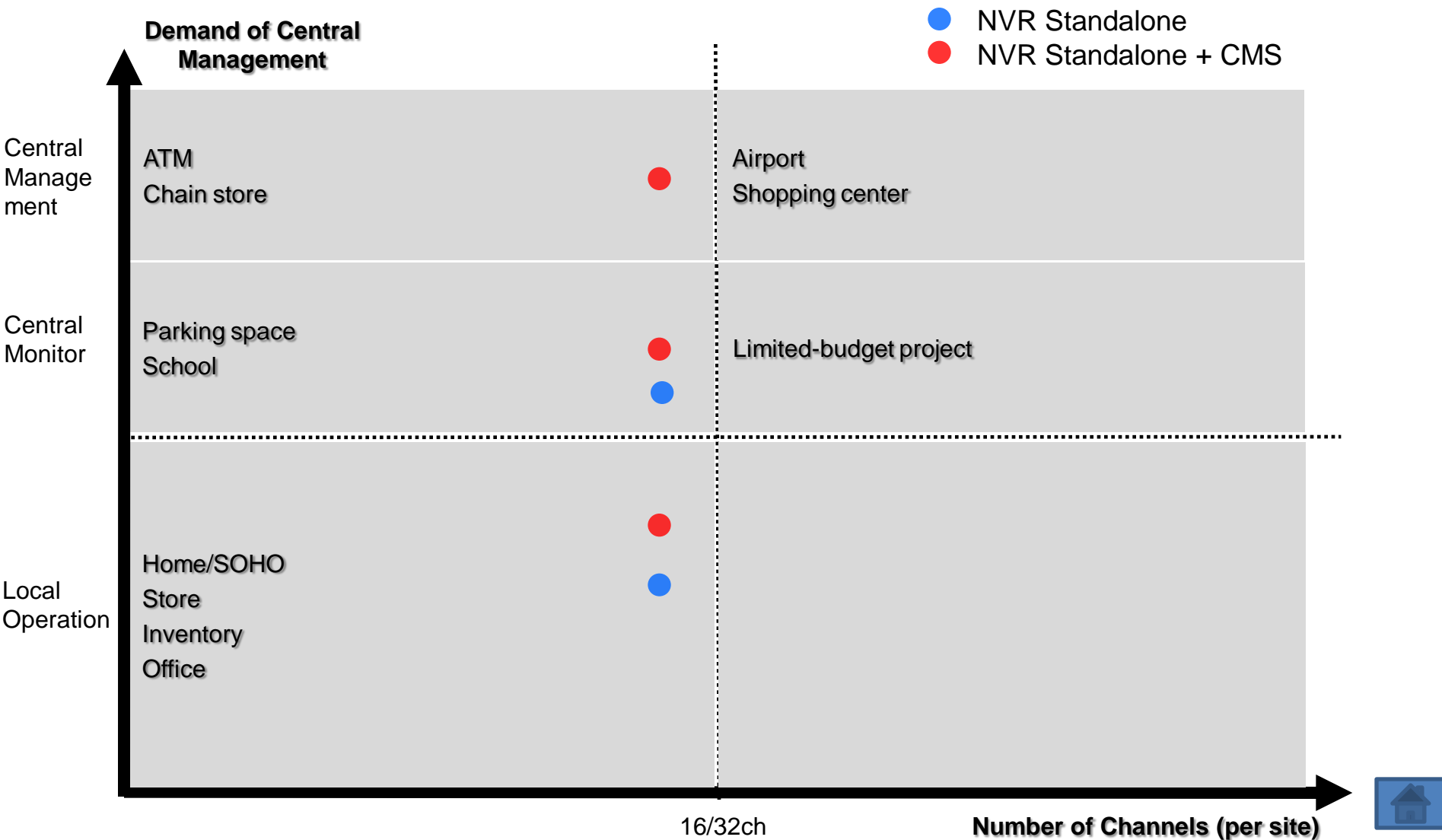


Specification

	NUUO NS-1040
Maximum Numbers of Licenses	8
Base License	4
Video Output	HDMI or VGA
Output Resolution	1920x1080, 1280x1024, 1280x720, 1024x768
Decoding Capacity (H.264)	120fps @1080p or 240fps @720p
Recording Performance	60Mbps
Operating System	Embedded Linux
HDD Bays	1x3.5" or 2x2.5"
RAID Level	RAID 0,1
External Storage	1xeSATA
Ethernet Ports	2xGigabit Port, RJ-45
I/O Interface	5xUSB 2.0 (for keyboard, mouse, UPS, USB flash drive)
Temperature	Operating: 0°C-40°C
IPCam Brand	Over 50 brands
Local	Complete configuration, live view, playback
Remote	Web (config, LV/PB), AP, mobile (iOS, Andriod)
POS	Yes
CMS	Yes



Market Segment



Competitor Comparison (QNAP)

- **Easy Setting and Easy to Start**

- NUUO: quick start (install wizard), [auto camera setup and ezNUUO service](#)
- QNAP: quick start

- **Local System Setting Ability**

- NUUO: full management by IR remote control, mouse and keyboard (camera, recording & event, I/O, disk volume, network, management, system, display settings) >> [totally PC-free](#)
- QNAP: simplified management by mouse and keyboard (admin password, network, date/time, disk volume, camera)

- **Chain Store Solution**

- NUUO: [POS integration](#)
- QNAP: N/A

- **Central Management System**

- NUUO: [map-based, video wall, compatible with NUUO Mainconsole family](#)
- QNAP: N/A

- **Other Value-Added Features for Local Display**

- NUUO: [instant playback, rewind](#)
- QNAP: N/A



Competitor Comparison (HIKVision)

- **Easy Setting and Easy to Start**

- NUUO: quick start (install wizard), [auto camera setup and ezNUUO service](#)
- HIKVision: quick start

- **Open Platform**

- NUUO: [support more than 1400 IP camera models from 50+ brands \(with free monthly update\)](#)
- HIKVision: support 10 brands of third party IP cameras and few models within it

- **Chain Store Solution**

- NUUO: [POS integration](#)
- HIKVision: N/A

- **Central management system**

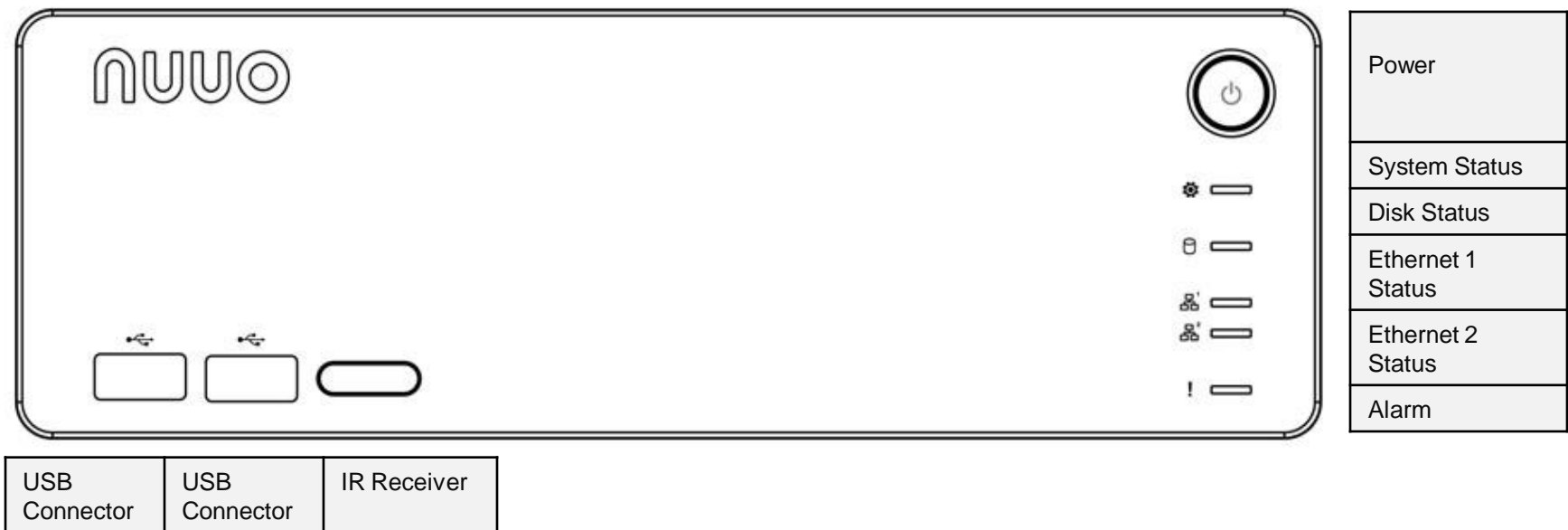
- NUUO: [full functions support](#)
- HIKVision: full functions support including video wall, E-map, local recording, but not that sophisticated



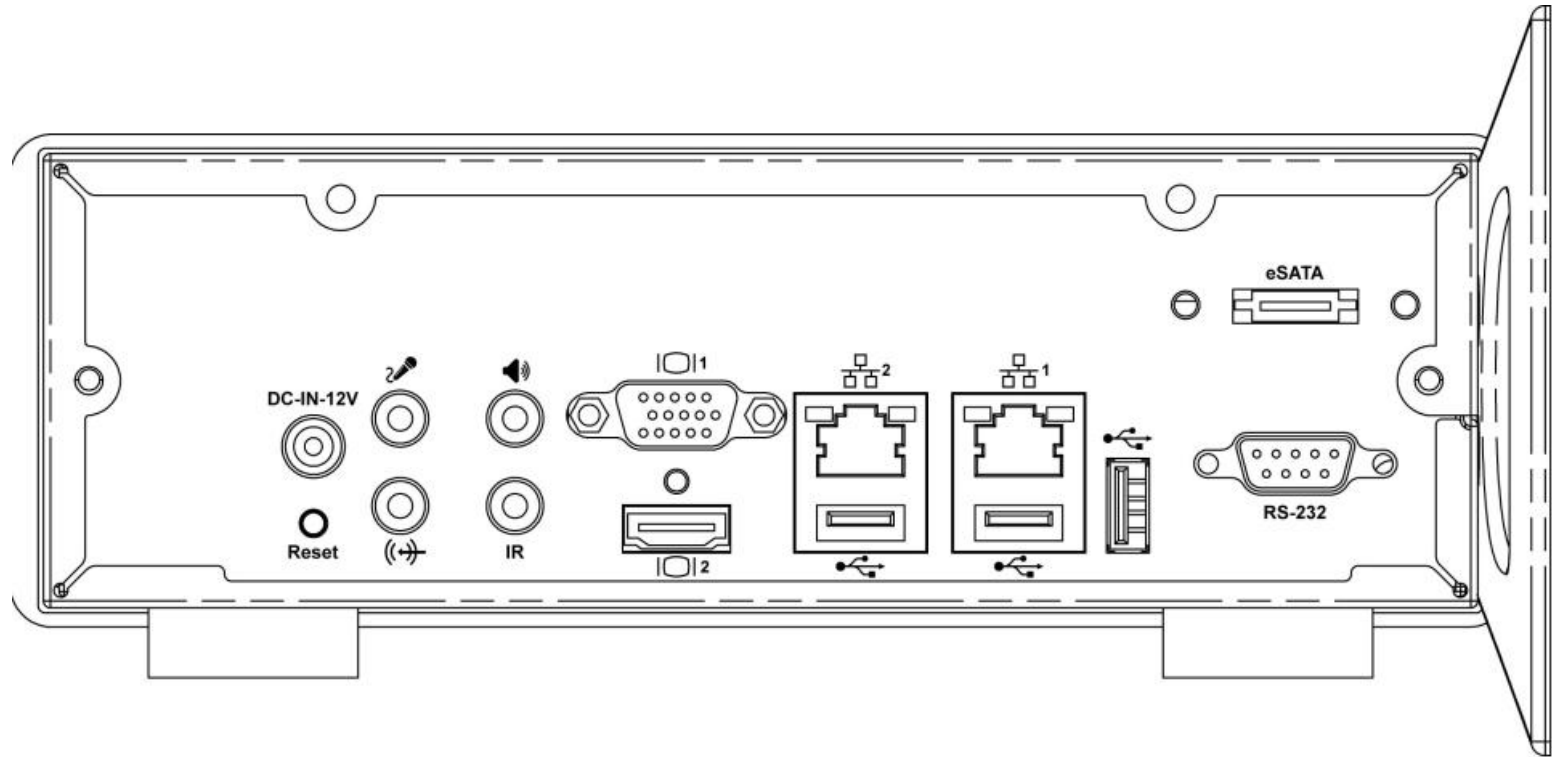
Appendix



Front View



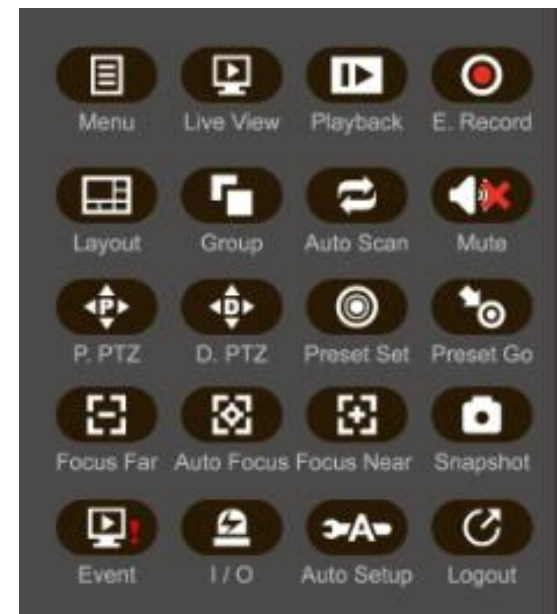
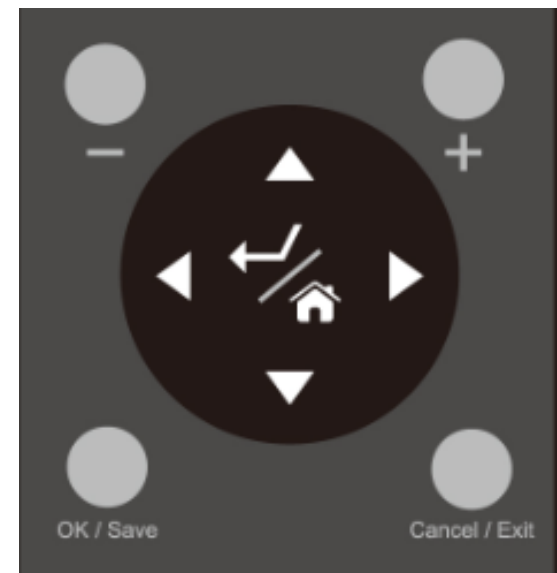
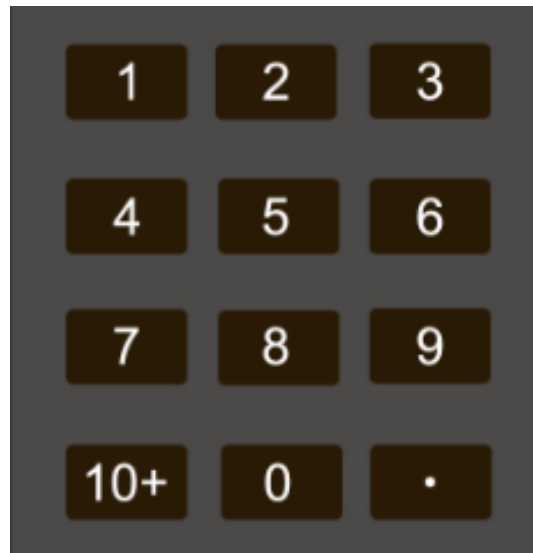
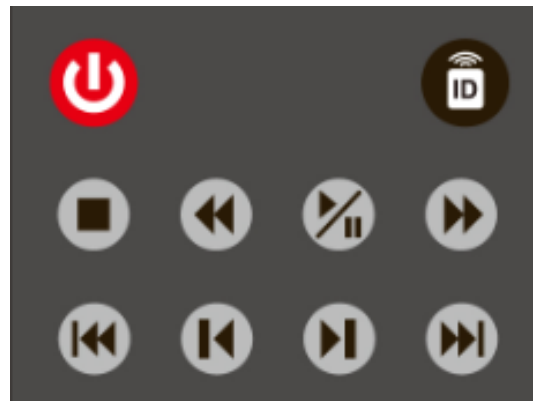
Rear View



Power Connector	3.5mm Microphone Jack (Reserved)	3.5mm Headphone Jack (Reserved)	Monitor 1: D-sub	RJ45 Network Connector 2	RJ45 Network Connector 1	USB Connector	eSATA Connector
Reset	3.5mm Line-in (Reserved)	IR Connector for Extension	Monitor 2: HDMI	USB Connector	USB Connector		RS-232 Connector (Reserved)



IR Remote Control



Fred Chien: fred@nuuo.com
Miranda Cheng: miranda@nuuo.com

