



## The Intelligent Surveillance Solution

# Hardware & Software NDVR Installation Guide

Ver. 5.0.140107.00

Table of Contents

TABLE OF CONTENTS

TABLE OF CONTENTS ..... 1

6000S/7000S SERIES ..... 2

    Product Specification ..... 2

    System Requirement ..... 2

    Hardware Installation..... 4

    Maximum I/O Cards support for 6000S/7000S ..... 6

7100 SERIES ..... 7

    Product Specification ..... 7

    System Requirement ..... 7

    Hardware Installation..... 8

8000HD SERIES..... 10

    Product Specification ..... 10

    System Requirement ..... 10

    Hardware Installation..... 11

DRIVER INSTALLATION ..... 13

SOFTWARE INSTALLATION ..... 15

SOFTWARE INSTALLATION – EXPRESS MODE ..... 21

SOFTWARE INSTALLATION – FAILOVER AGENT (STANDARD MODE) ..... 24

SOFTWARE INSTALLATION – FAILOVER AGENT (EXPRESS MODE)..... 29

APPENDIX - MINIMUM HARDWARE REQUIREMENT ..... 33

## 6000S/7000S SERIES

### Product Specification

Model	6016S	6008S	6004S
Display Rate	480fps(NTSC); 400fps (PAL)	240fps(NTSC); 200fps (PAL)	120fps(NTSC); 100fps (PAL)
Recording Rate (CIF)	480fps(NTSC); 400fps (PAL)	240fps(NTSC); 200fps (PAL)	120fps(NTSC); 100fps (PAL)
Maximum Card	4	4	4
Video Input	16	8	4
Audio Input	16	8	4
Video Resolution	NTSC: 176x120; 352x240; 704x480 PAL: 176x144; 352x288; 704x576		
Compression Format	Hardware Compression H.264		
	7016S	7008S	7004S
Display Rate	480fps(NTSC); 400fps (PAL)	240fps(NTSC); 200fps (PAL)	120fps(NTSC); 100fps (PAL)
Recording Rate (D1)	480fps(NTSC); 400fps (PAL)	240fps(NTSC); 200fps (PAL)	120fps(NTSC); 100fps (PAL)
Maximum Card	4	4	4
Video Input	16	8	4
Audio Input	16	8	4
Video Resolution	NTSC: 176x120; 352x240; 704x480 PAL: 176x144; 352x288; 704x576		
Compression Format	Hardware Compression H.264		

## System Requirement

The system requirement depends on the number of camera connections and the total bit rate of the IP cameras. Please refer [Appendix - Minimum Hardware Requirement](#) or check NUUO Calculator on <http://support.nuuo.com/calculator/>

**Caution**

---



- The electronic components within the unit are sensitive to damage from Electro-Static Discharge (ESD). Please take precautions at all times when handling the unit or its sub-assemblies.
  - Proper Surge solution is needed for outdoor application. It provides protection from damaging transient voltage surges and spikes.
-

Hardware Installation

**Step1:** Insert the card onto an empty PCI-e slot. Connect the **Audio/Video Cable** to the connector.

**Note 1:** The audio input connectors are with red wires and marked of “A” on them (such as “A1/9”); the video input connectors are with black wires and marked of “V” (such as “V8/16”).

**Note 2:** You need to power down the PC before you insert the card.

**Step 2:** Connect the **Watchdog wire** to the **reset** connector on the main board.

**Note:** With the **Watchdog Wire** connected, the system will be restarted if any abnormal conditions.

**Step 3:** Turn on your PC and start Windows.

**Step 3:** Insert the included Software CD into CD-ROM.

**Step 4:** Refer the section Driver Installation on page 18 to install driver.

**Step 5:** After driver is installed, restart your PC.

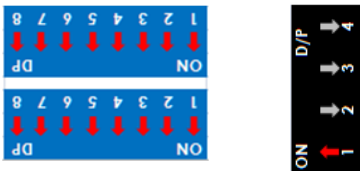
**Optional I/O Card:** refer to the figures on the following pages.

**Step 1:** Fix the IO card onto your PC.

**Step 2:** Connect the Capture Card and the I/O Card with an included ribbon cable (**2.00mm** IDC cable).

**Note 1:** The default configuration of blue slide switch on I/O Card as below.

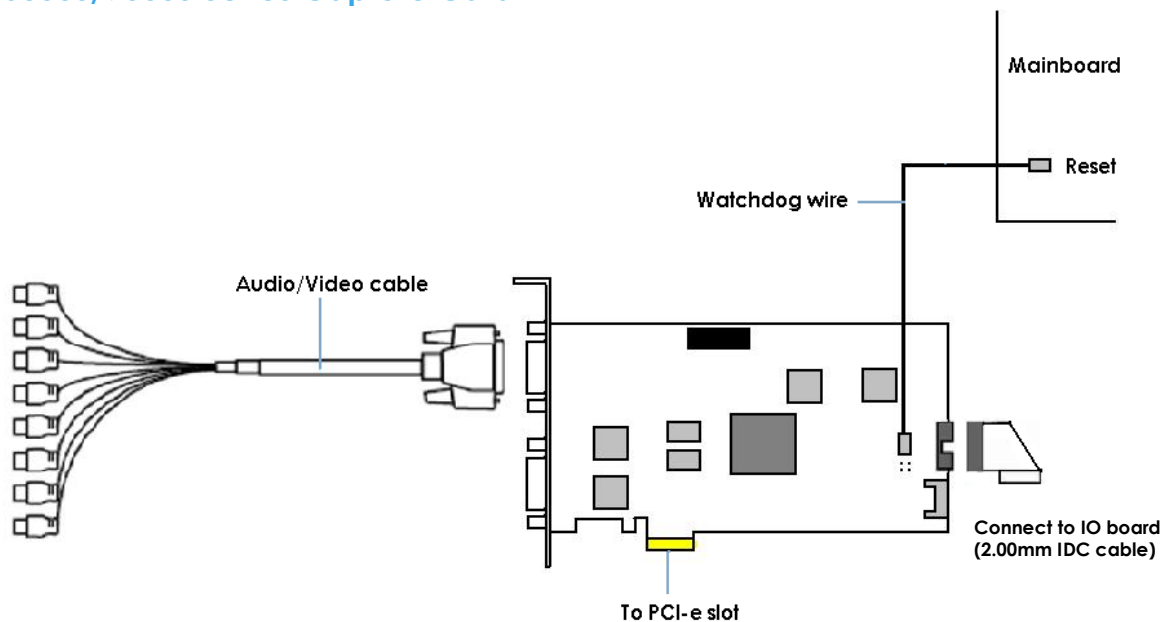
**Note 2:** If you only use one I/O card to connect with one of 6000S/7000S cards, please make sure the configuration of the black slide switch as below.



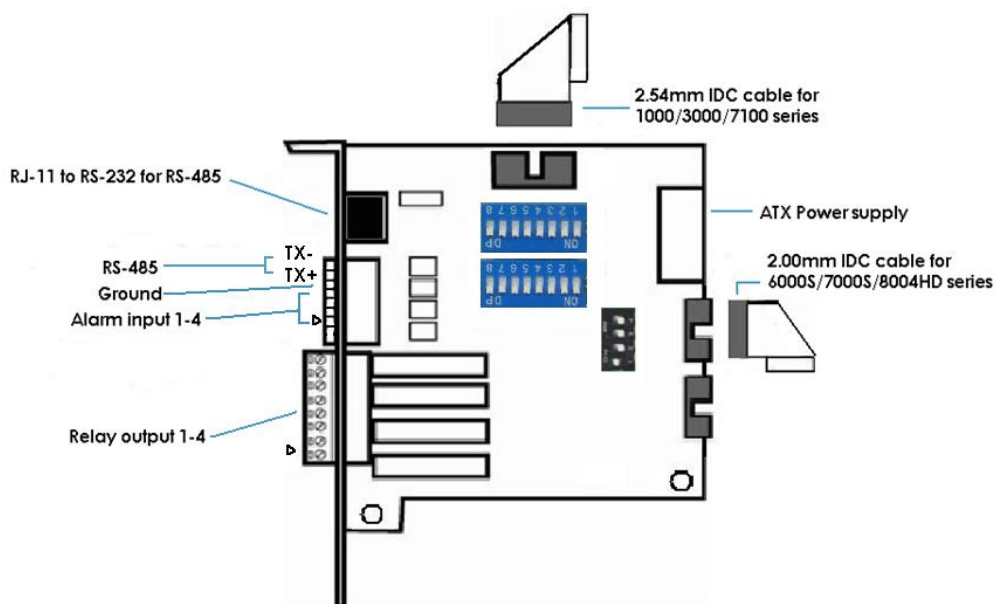
**Maximum optional I/O Card support:**

6000S/7000S can support maximum 4 I/O cards. Please refer to figures on the following pages.

## 6000S/7000S Series Capture Card

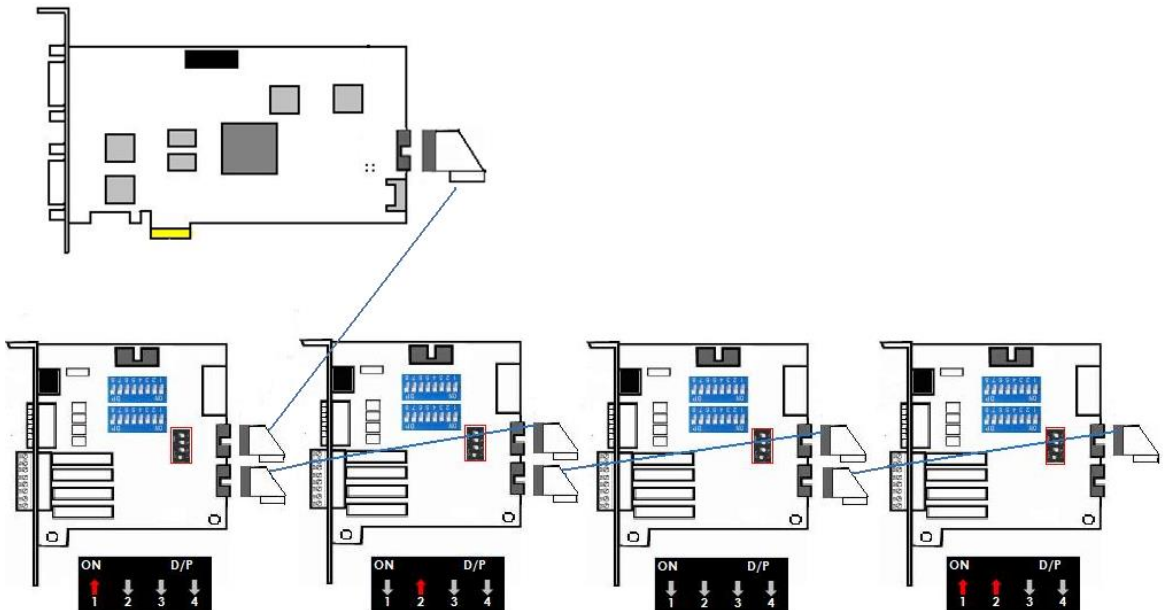


## I/O card



**Note:** Please do not connect 2 capture cards in one IO board at the same time.

### Maximum I/O Cards support for 6000S/7000S



**Note:** If you use more than one IO card, please make sure the configuration of each black switch as above.

**7100 SERIES**  
**Product Specification**

	7116	7108
Display Rate	480fps(NTSC); 400fps (PAL)	240fps(NTSC); 200fps (PAL)
Recording Rate <b>(D1)</b>	480fps(NTSC); 400fps (PAL)	240fps(NTSC); 200fps (PAL)
Maximum Card	1	1
Video Input	16	8
Audio Input	16	8
Video Resolution	NTSC: 176x120; 352x240; 704x480 PAL: 176x144; 352x288; 704x576	
TV Output Rate	w/ HDMI: RCA & HDMI: 10fps w/o HDMI: RCA: 25fps Only HDMI: HDMI: 14fps	
Compression Format	Hardware Compression H.264	

**System Requirement**

The system requirement is depend on the number of camera connections and the total bit rate of the IP cameras. Please refer [Appendix - Minimum Hardware Requirement](#) or check NUUO Calculator on <http://support.nuuo.com/calculator/>

**Caution**



- The electronic components within the unit are sensitive to damage from Electro-Static Discharge (ESD). Please take precautions at all times when handling the unit or its sub-assemblies.
- Proper Surge solution is needed for outdoor application. It provides protection from damaging transient voltage surges and spikes.



Hardware Installation

**Step1:** Insert the card onto an empty PCI-e slot. Connect the **Audio/Video Cable** to the connector.

**Note 1:** The audio input connectors are with red wires and marked of “A” on them (such as “A1/9”); the video input connectors are with black wires and marked of “V” (such as “V8/16”).

**Note 2:** You need to power down the PC before you insert the card.

**Step 2:** Connect the **Watchdog wire** to the **reset** connector on the main board.

**Note:** With the **Watchdog Wire** connected, the system will be restarted if any abnormal conditions.

**Step 3:** Turn on your PC and start Windows.

**Step 3:** Insert the included Software CD into CD-ROM.

**Step 4:** Refer the section Driver Installation on page 18 to install driver.

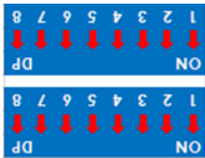
**Step 5:** After driver is installed, restart your PC.

**Optional I/O Card:** refer to the figures on the following pages.

**Step 1:** Fix the IO card onto your PC.

**Step 2:** Connect the Capture Card and the I/O Card with an included ribbon cable (**2.54mm** IDC cable).

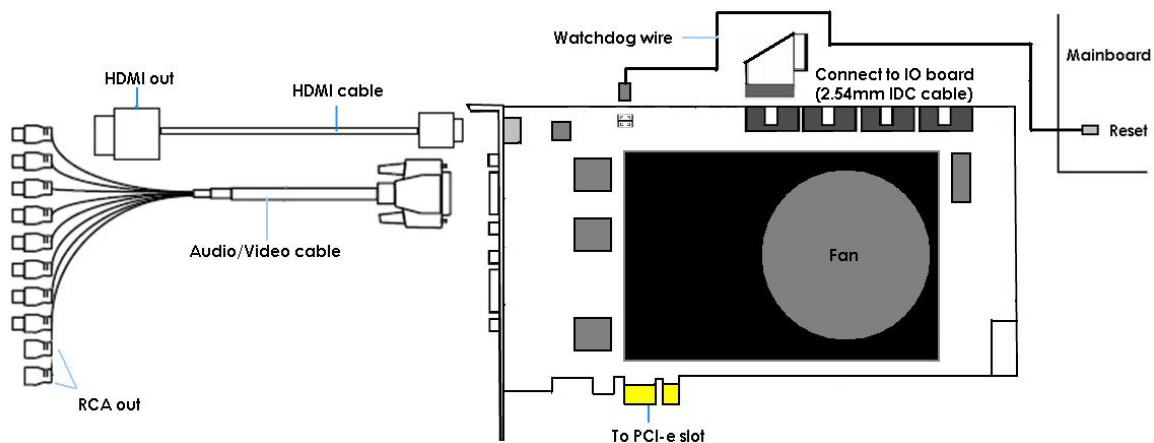
**Note 1:** The default configuration of blue slide switch on I/O Card as below.



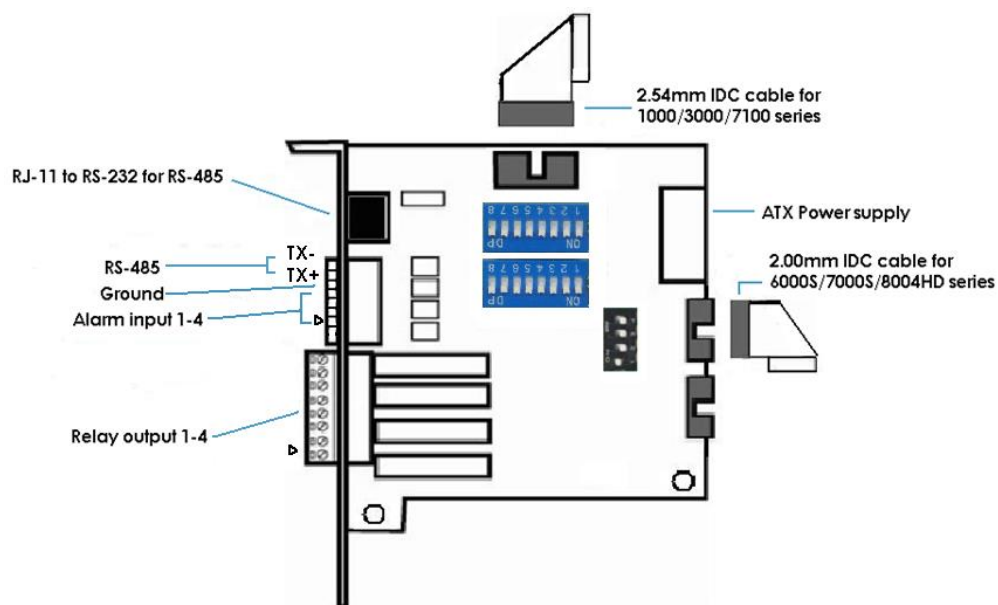
**Note 2:** Before install SCB-7100 Series cards, please connect HDMI cable first then it would be easier to fix the card onto the PCI-e slot.

**Note 3:** Some chassis may not be suitable for installing SCB-7100 series due to the original design, please check the dimension of the chassis before installing.

## 7100 Series Capture Card



## I/O card



## Maximum I/O Cards support for 7116

Please refer to page 5 [Maximum I/O Cards support for G3-3016](#)

**8000HD SERIES**  
**Product Specification**

8004HD	
Display Rate	120fps(NTSC); 100fps(PAL)
Recording Rate	1080P@120(NTSC) 1080P@100(PAL)
Maximum Card	4
Video Input	4
Audio Input	0
Video Resolution	1080P30/25 720P60/50/30/25
Compression Format	Hardware Compression H.264

**System Requirement**

The system requirement is depend on the number of camera connections and the total bit rate of the IP cameras. Please refer [Appendix - Minimum Hardware Requirement](#) or check NUUO Calculator on <http://support.nuuo.com/calculator/>

**Caution**

---



- The electronic components within the unit are sensitive to damage from Electro-Static Discharge (ESD). Please take precautions at all times when handling the unit or its sub-assemblies.
  - Proper Surge solution is needed for outdoor application. It provides protection from damaging transient voltage surges and spikes.
-

### Hardware Installation

**Step1:** Insert the card onto an empty PCI-e slot. Connect the **BNC Cable** (not in product content) to the connector.

**Note:** You need to power down the PC before you insert the card.

**Step 2:** Connect the **Watchdog wire** to the **reset** connector on the main board.

**Note:** With the **Watchdog Wire** connected, the system will be restarted if any abnormal conditions.

**Step 3:** Turn on your PC and start Windows.

**Step 3:** Insert the included Software CD into CD-ROM.

**Step 4:** Refer the section Driver Installation on page 18 to install driver.

**Step 5:** After driver is installed, restart your PC.

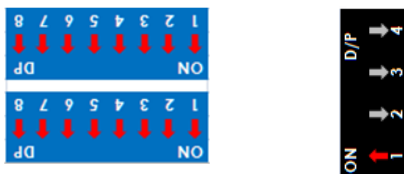
**Optional I/O Card:** refer to the figures on the following pages.

**Step 1:** Fix the IO card onto your PC.

**Step 2:** Connect the Capture Card and the I/O Card with an included ribbon cable (**2.00mm** IDC cable).

**Note 1:** The default configuration of blue slide switch on I/O Card as below.

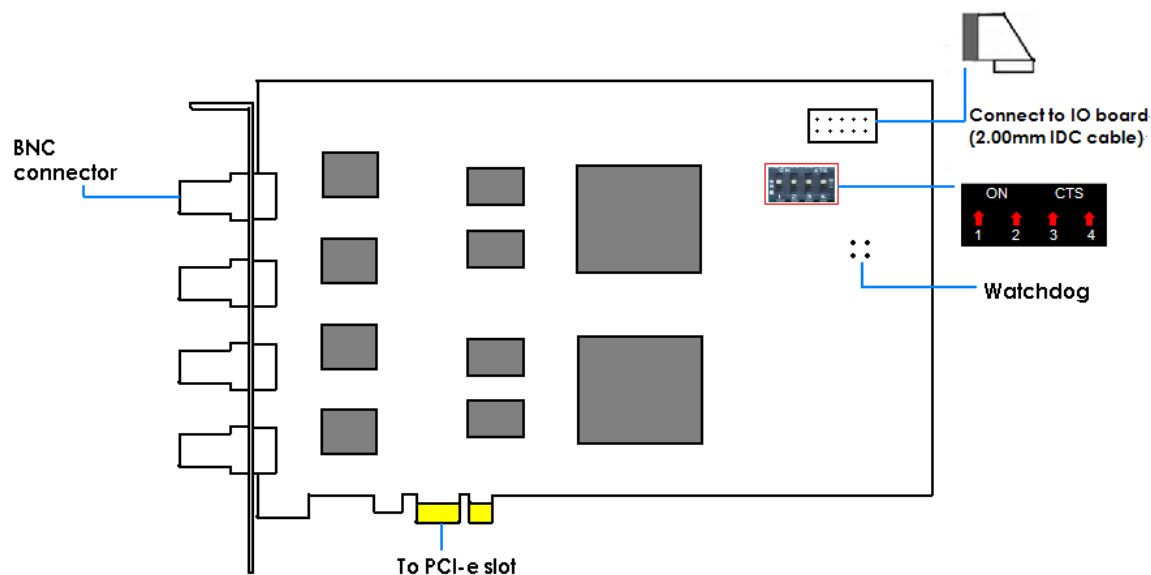
**Note 2:** If you only use one I/O card to connect with an 8004HD card, please make sure the configuration of the black slide switch as below.



### Maximum optional I/O Card support:

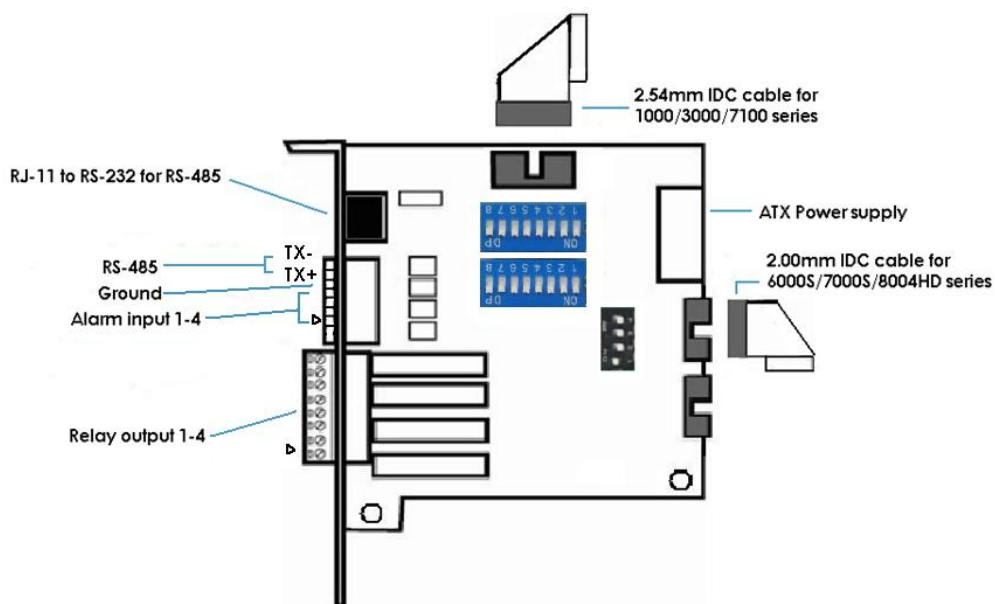
Please refer to page 11 [Maximum I/O Cards support for 6000S/7000S](#)

## 8004HD Card



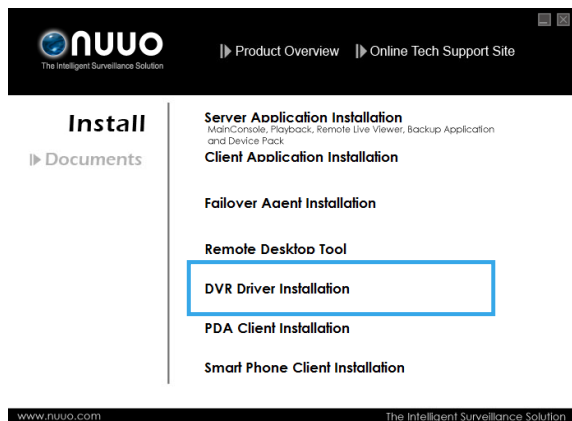
**Note:** The default configuration of the black switch on 8004HD card is as above. Do not adjust it.

## I/O card



### DRIVER INSTALLATION

**Step 1:** Insert the Installation CD. Run autostartup.exe  from the CD-ROM directly to start the installation.

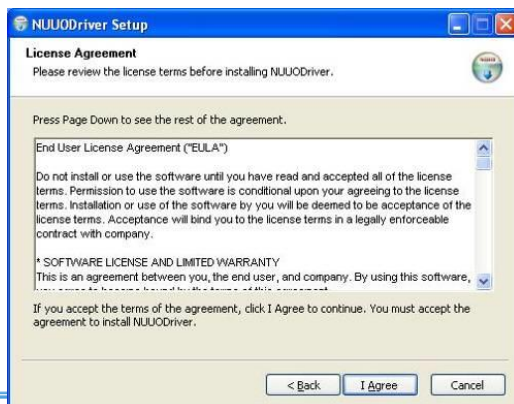


**Step 2:** Select “DVR Driver Installation” then click on it.

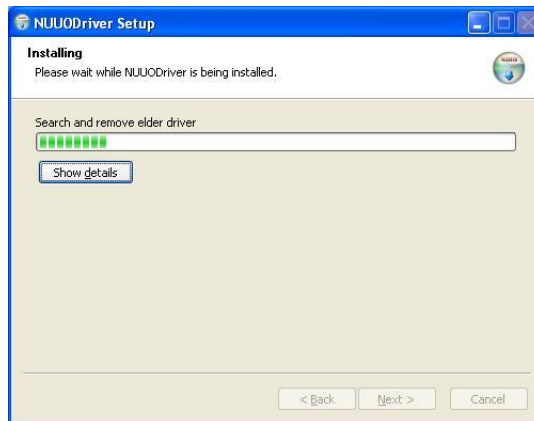
**Step 3:** In the NUUODriver Setup Wizard dialog box, click Next to continuous.



**Step 4:** Check the “License agreement”. Click “I Agree” to continuous.



### Step 5: Installing NUUODriver.

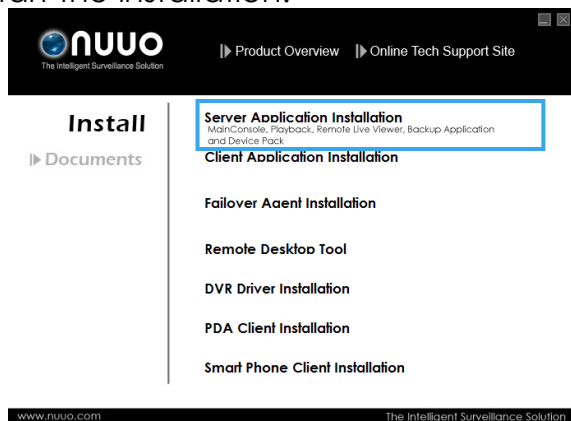


### Step 6: Click “**Finish**” after installing the system completely, and then choose to reboot now or later.



### SOFTWARE INSTALLATION

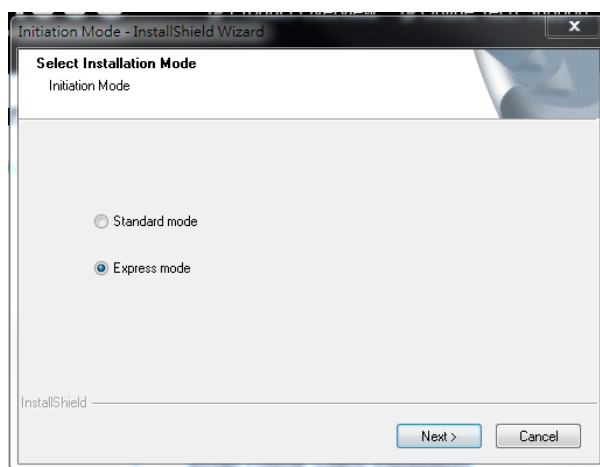
**Step 1:** Insert the Installation CD. Run Autorun Tool from the CD-ROM directly to start the installation.



**Step 2:** Select "Server Application Installation" then click on it.

**Step 3:** In the InstallShield Wizard dialog box, select language and click **Next** to continuous.

**Step 4:** There are 2 Installation Mode of options in "Initiation Mode" window, select one and click Next to start the installshield of Server package.

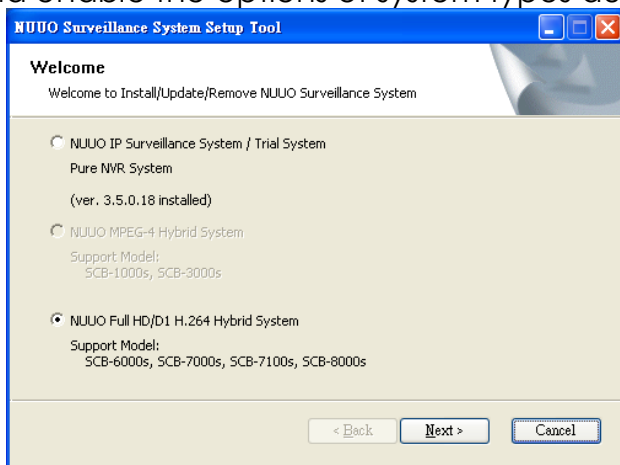




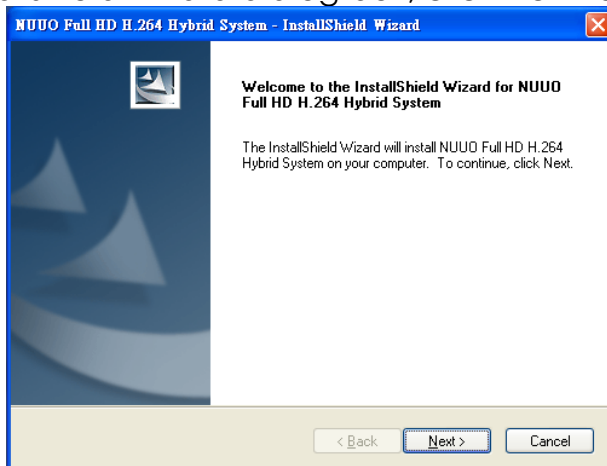
**Step 3:** There are 4 system types of options in “System Setup Tool” window, select one and click Next to start the installshield of Server package.

- NUUO IP Surveillance System/Trial System
- NUUO MPEG-4 Hybrid System
- NUUO Full HD/D1 H.264 Hybrid System

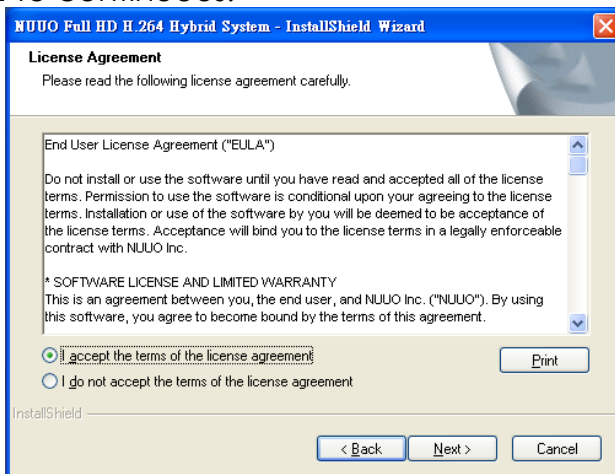
**Note:** The Setup Tool will detect the type of capture cards installs on PC and enable the options of system types automatically.



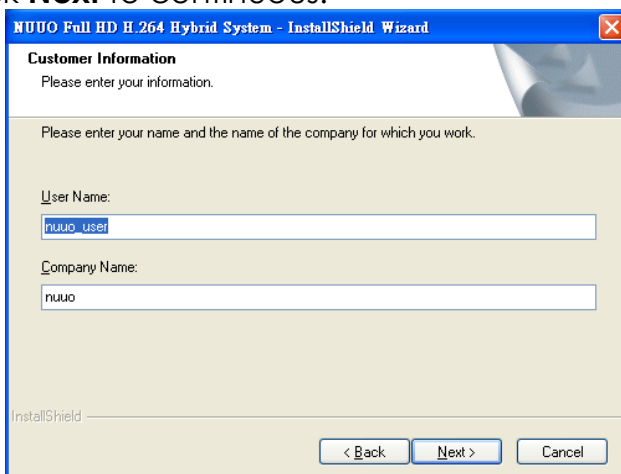
**Step 4:** In the InstallShield Wizard dialog box, click **Next** to continuous.



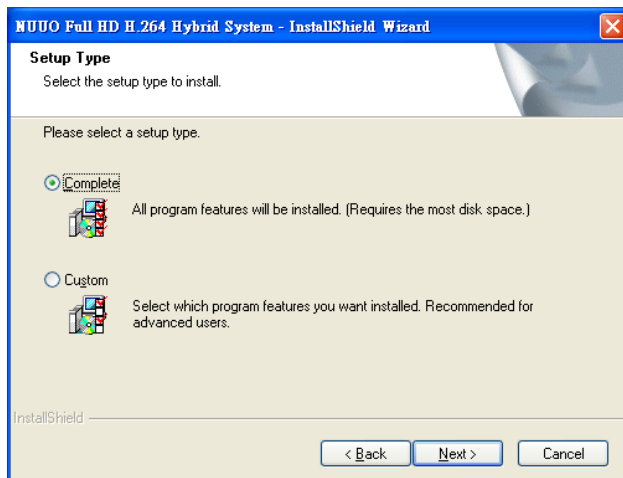
**Step 5:** Check the option "I accept the terms of the license agreement". Click **Next** to continuous.



**Step 6:** Please enter your name and the company name for which you work. Click **Next** to continuous.



**Step 7:** Select “Complete Setup Type” or “Custom Setup Type” to install the System.



### **COMPLETE SETUP TYPE**

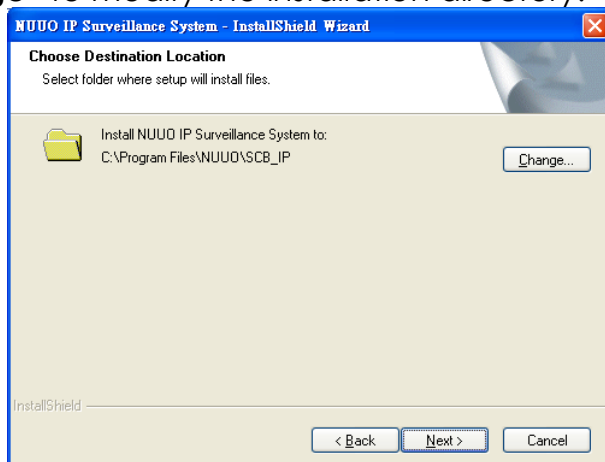
Install all program features into the default directory.

- Check the option “**Complete**”, and then click “**Next**”. All program features will be installed. [Require the most disk space.]

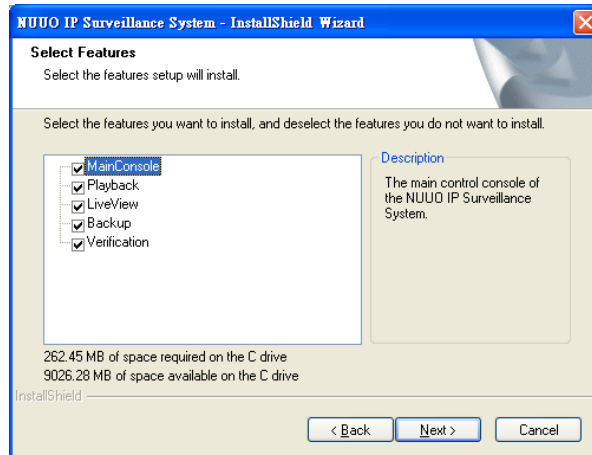
### **CUSTOM SETUP TYPE**

Install the system to a preferred directory. Or select whichever program feature(s) to install. This is recommended for advanced users.

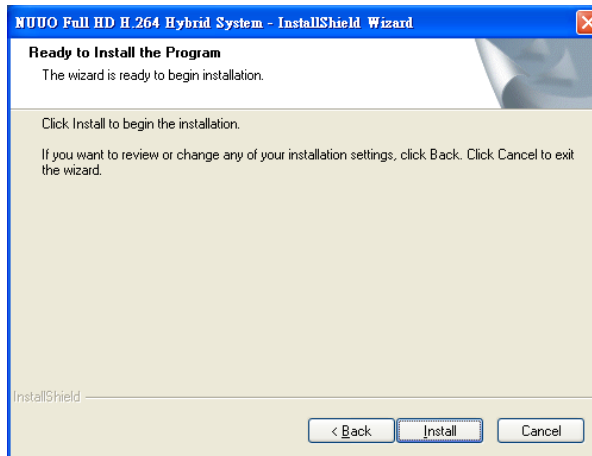
- Check the option “**Custom**”, and then click “**Next**”.
- Select appointed folder where setup will install files to. Click “**Change**” to modify the installation directory.



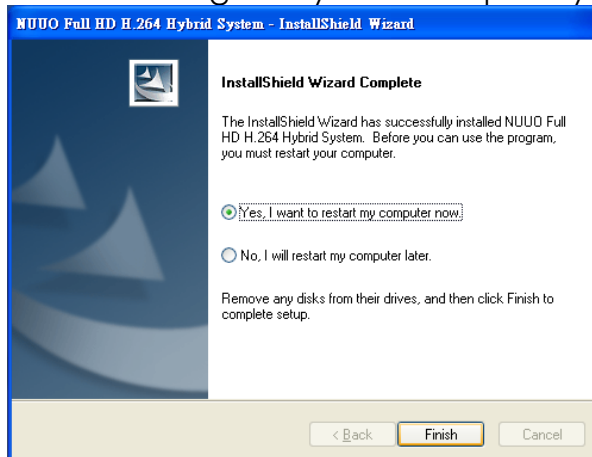
- Select the features setup will install. There are 4 features to choose in the server setup process: MainConsole, Playback, LiveView, Backup, and Verification tool. Click “**Next**” after confirmation.



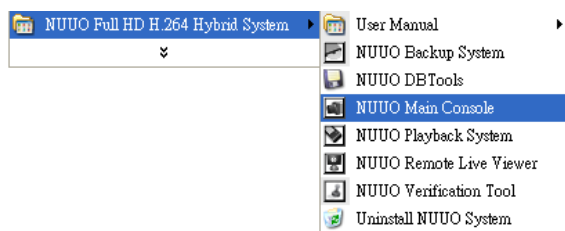
Step 8: Click install to start the installation.



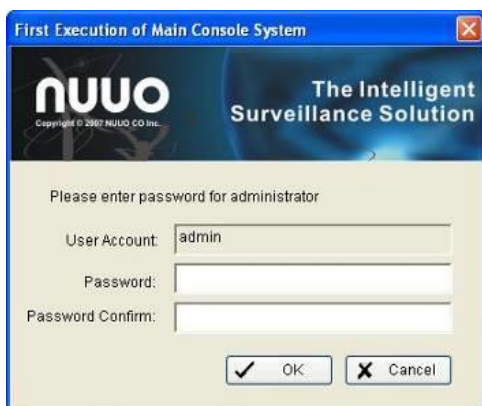
Step 9: Click Finish after installing the system completely.



### Step 10: Execute the Main Console

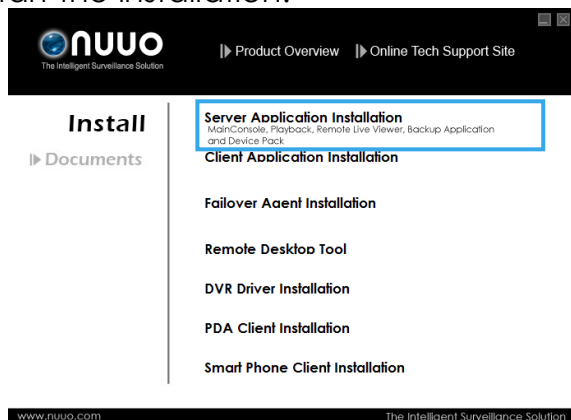


**Step 11:** Enter the password you like into the edit box and enter again at the edit of Password Confirm. And then press "OK". Now enjoy our Intelligent Surveillance Solution.



### SOFTWARE INSTALLATION – EXPRESS MODE

**Step 1:** Insert the Installation CD. Run Autorun Tool from the CD-ROM directly to start the installation.

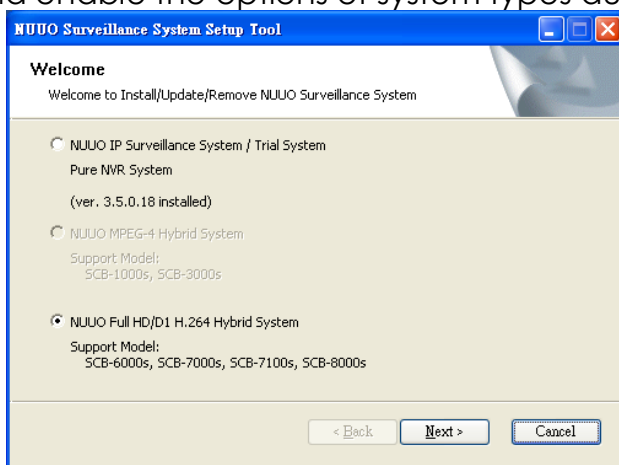


**Step 2:** Select “Server Application Installation” then click on it.

**Step 3:** There are 4 system types of options in “System Setup Tool” window, select one and click Next to start the installshield of Server package.

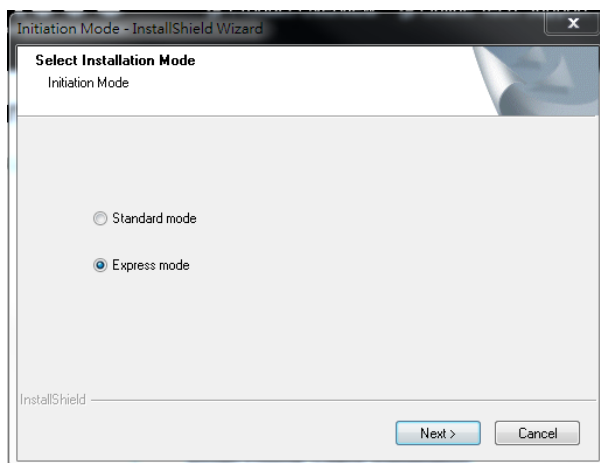
- NUUO IP Surveillance System/Trial System
- NUUO MPEG-4 Hybrid System
- NUUO Full HD/D1 H.264 Hybrid System

**Note:** The Setup Tool will detect the type of capture cards installs on PC and enable the options of system types automatically.

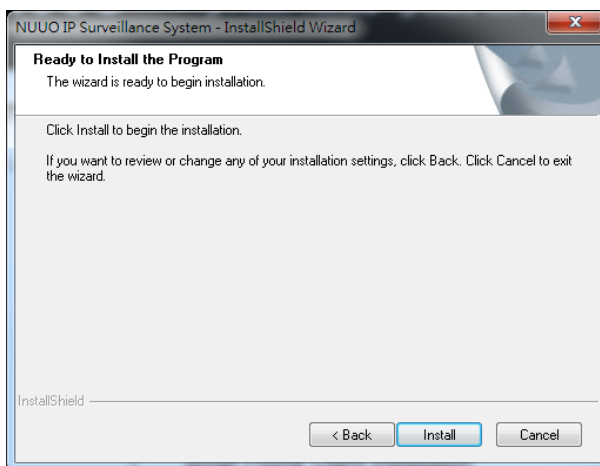


**Step 4:** In the InstallShield Wizard dialog box, select language and click **Next** to continuous.

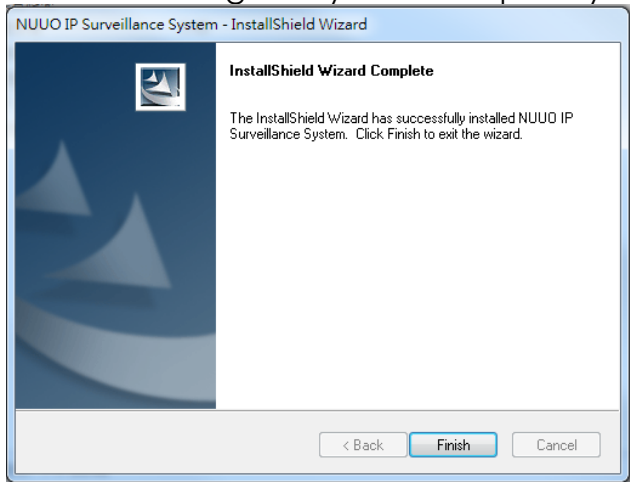
**Step 5:** There are 2 Installation Mode of options in “Initiation Mode” window, select one and click Next to start the installshield of Server package.



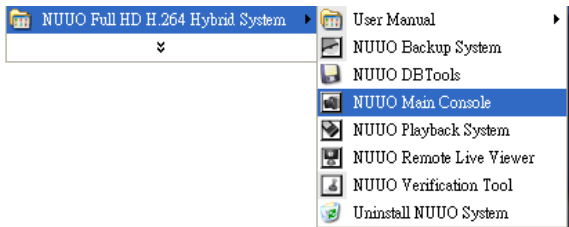
**Step 6:** Click install to start the installation.



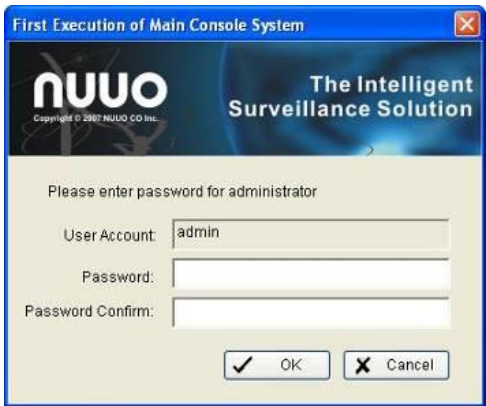
Step 7: Click Finish after installing the system completely.



Step 8: Execute the Main Console



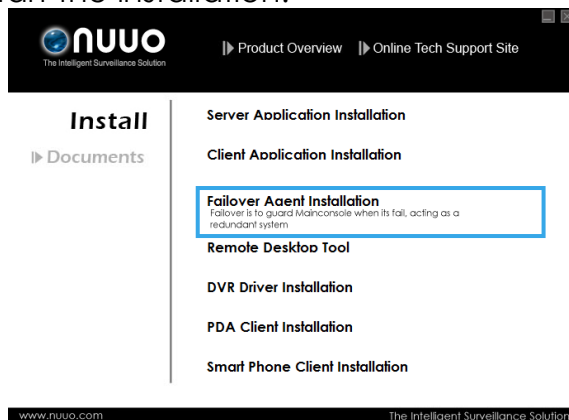
Step 9: Enter the password you like into the edit box and enter again at the edit of Password Confirm. And then press “OK”. Now enjoy our Intelligent Surveillance Solution.





### SOFTWARE INSTALLATION – FAILOVER AGENT (STANDARD MODE)

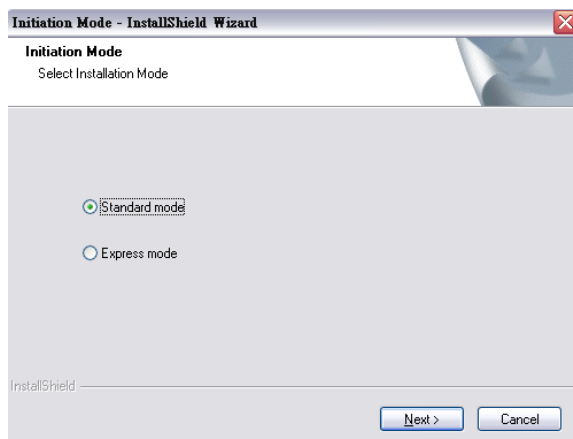
**Step 1:** Insert the Installation CD. Run Autorun Tool from the CD-ROM directly to start the installation.



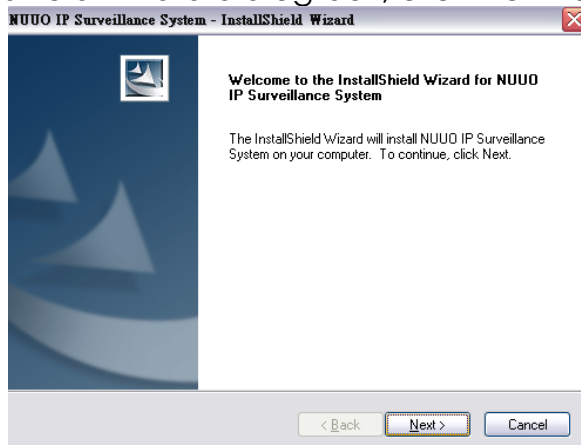
**Step 2:** Select “Failover Agent Installation” then click on it.

**Step 3:** In the InstallShield Wizard dialog box, select language and click **Next** to continuous.

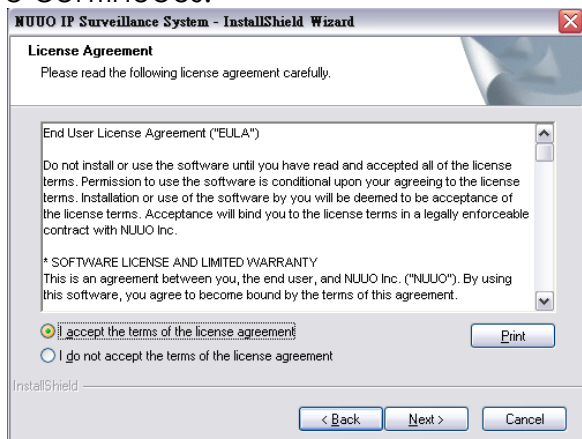
**Step 4:** There are 2 Installation Mode of options in “Initiation Mode” window, select one and click Next to start the installshield of Server package.



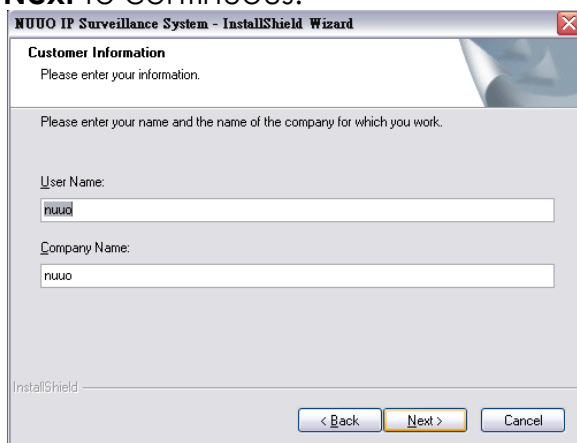
**Step 5:** In the InstallShield Wizard dialog box, click **Next** to continuous.



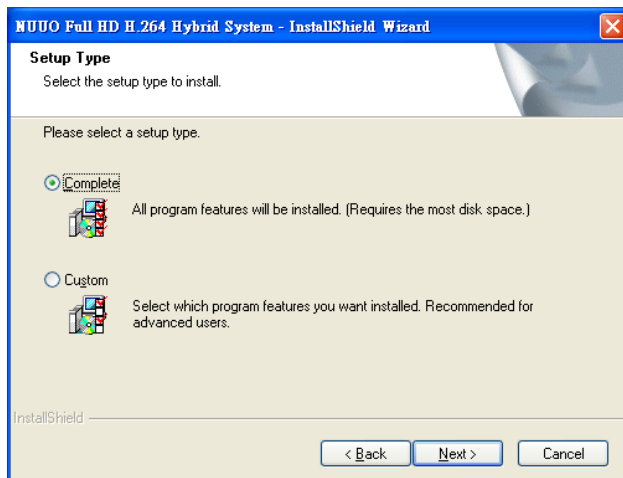
**Step 6:** Check the option "I accept the terms of the license agreement". Click **Next** to continuous.



**Step 7:** Please enter your name and the company name for which you work. Click **Next** to continuous.



**Step 8:** Select “Complete Setup Type” or “Custom Setup Type” to install the System.



### **COMPLETE SETUP TYPE**

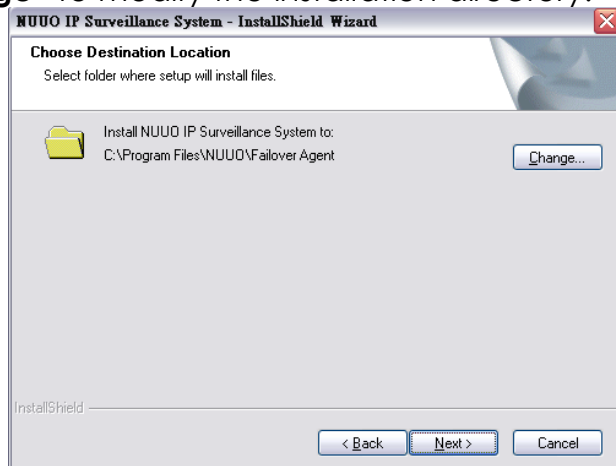
Install all program features into the default directory.

- Check the option “**Complete**”, and then click “**Next**”. All program features will be installed. [Require the most disk space.]

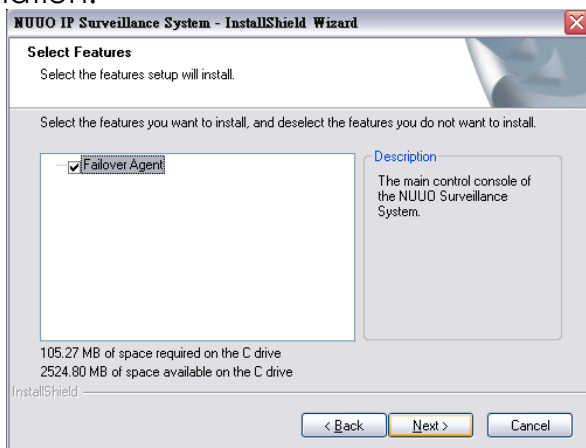
### **CUSTOM SETUP TYPE**

Install the system to a preferred directory. Or select whichever program feature(s) to install. This is recommended for advanced users.

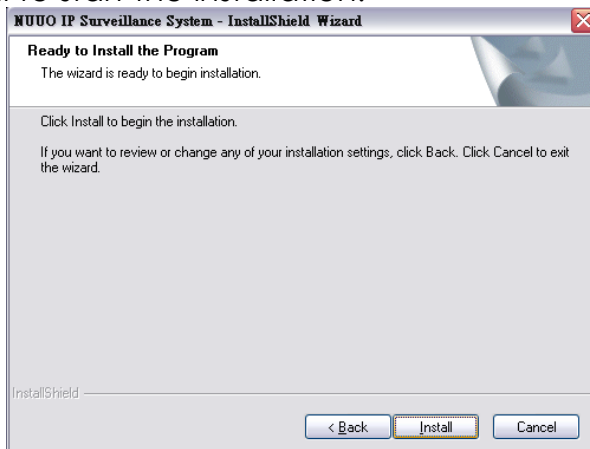
- Check the option “**Custom**”, and then click “**Next**”.
- Select appointed folder where setup will install files to. Click “**Change**” to modify the installation directory.



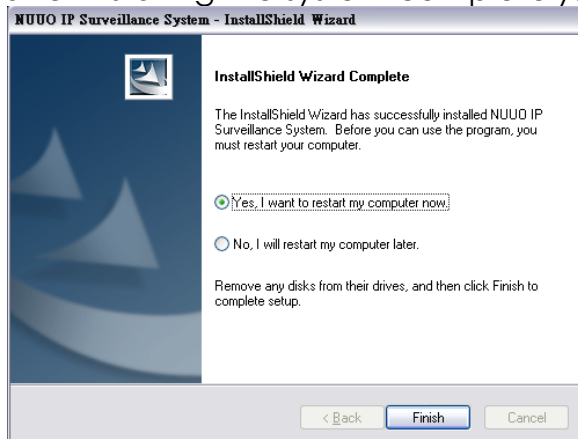
- Select the features setup will install. Click “**Next**” after confirmation.



Step 8: Click install to start the installation.



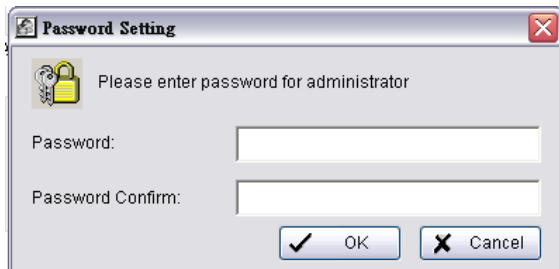
Step 9: Click Finish after installing the system completely.



### Step 10: Execute the Failover Agent



**Step 9:** Enter the password you like into the edit box and enter again at the edit of Password Confirm. And then press “OK”. Now enjoy our Failover Agent service.



### SOFTWARE INSTALLATION – FAILOVER AGENT (EXPRESS MODE)

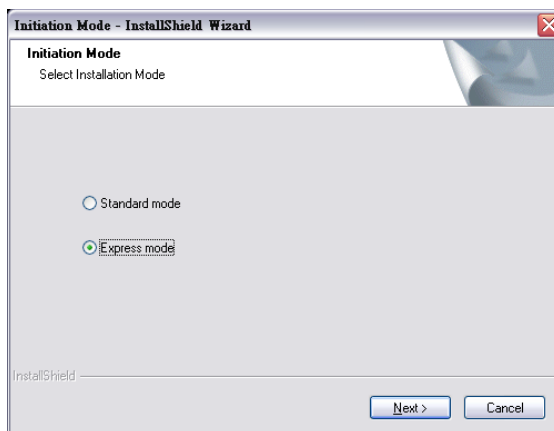
**Step 1:** Insert the Installation CD. Run Autorun Tool from the CD-ROM directly to start the installation.



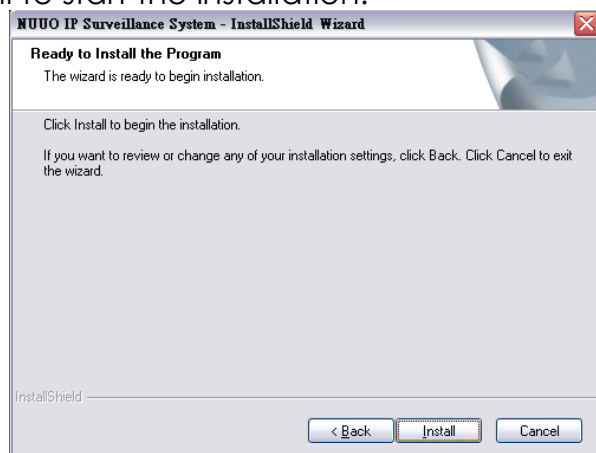
**Step 2:** Select “Failover Agent Installation” then click on it.

**Step 3:** In the InstallShield Wizard dialog box, select language and click **Next** to continuous.

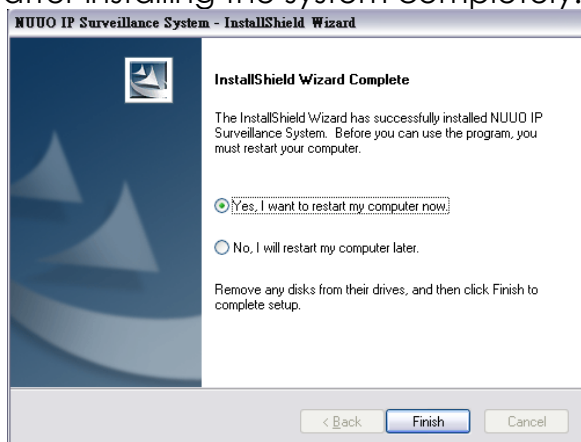
**Step 4:** There are 2 Installation Mode of options in “Initiation Mode” window, select one and click Next to start the installshield of Server package.



**Step 5:** Click install to start the installation.



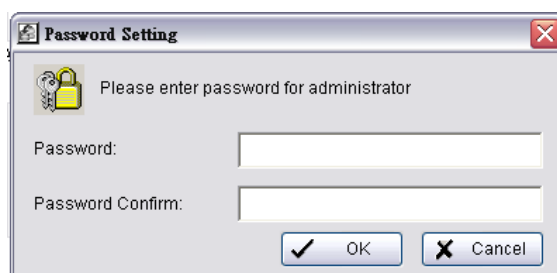
**Step 6:** Click Finish after installing the system completely.



**Step 7:** Execute the Failover Agent



**Step 8:** Enter the password you like into the edit box and enter again at the edit of Password Confirm. And then press “OK”. Now enjoy our Failover Agent service.



**Note:** When use Windows 8, please disable Metro function first before start Mainconsole. For further steps, please refer to:

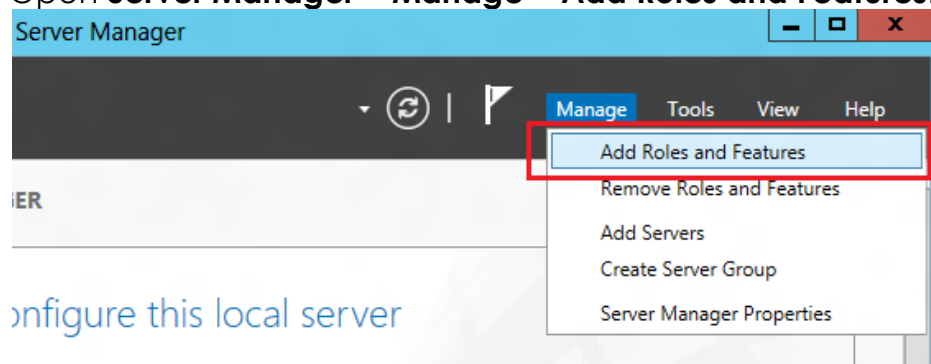
<http://www.youtube.com/watch?v=xERxpbwBt0U>

**Note:** When use Windows Server 2012, please enable desktop experience first before start Mainconsole. For further steps, please refer to:

<http://social.technet.microsoft.com/wiki/contents/articles/10531.windows-server-8-beta-how-to-enable-desktop-experience-feature-en-us.aspx>

the Desktop Experience feature in Windows Server 8 Beta belongs to **User Interfaces and Infrastructure** feature. In order to install Desktop Experience feature, do the following steps:

Open **Server Manager > Manage > Add Roles and Features**.



Before you begin to install a feature, you can read information in the **Before you begin** page. This page is very useful for anyone who has started learning Windows Server 8. Select **Skip this page by default** in order to remove this page for the next times you add roles or features.

In the **Select installation type** page, you have two options:

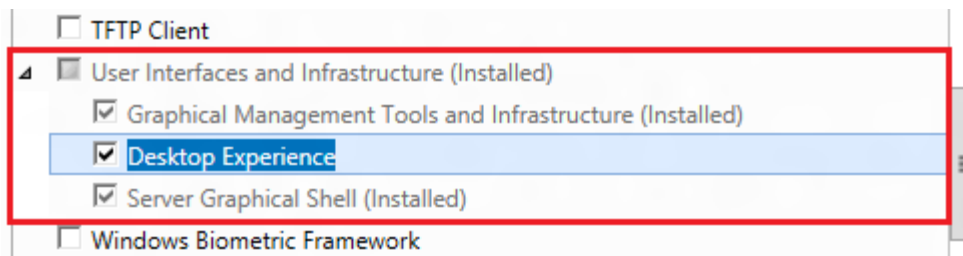
1. Role-based or feature-based installation: this option that similar to the one available in the Windows Server 2008 is used when you want to add roles, features in single server.
2. Remote Desktop Services scenario-based installation this option allows you to install, configure and manage RS session Host servers from a central location.

In the **Select destination server** page, select the server pool under **SERVER POOL**. With flexible server platform, now you can select a virtual hard disk



as a destination server when deployed roles or features.

Skip the **Select server roles** page. In the **Select features** page, you can select User Interfaces and infrastructure feature. You will be prompted to install the required components or services “**Ink and Handwriting Services**” and “**Media Foundation**”. Click **Add Features**.



In the **Confirm installation selections** page, select **Restart the destination server automatically if required**. You must restart computer after installing completely.

You have another way to add feature by using Powershell:  
**Add-WindowsFeature Desktop-Experience.**

## **APPENDIX - MINIMUM HARDWARE REQUIREMENT**

Please refer NUUO online Design Tool for sever spec evaluation:

<http://www.nuuo.com/calculator/>